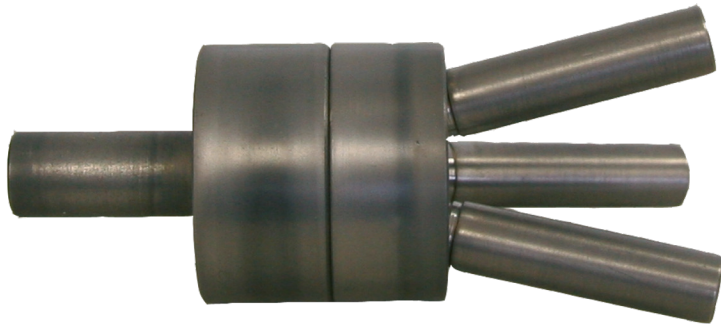


# FS 3



The Palas® flow splitter FS 3 splits an aerosol flow into three (equal) parts.

## OPERATION PRINCIPLE

Palas® flow splitters can be used for a maximum inlet volume flow of 50 l/min.

## BENEFITS

- reliable and reproducible splitting of aerosol flows
- easy handling and cleaning

## DATASHEET

Material	Conductive, anti-corrosive steel
Diameter	10 mm (inlet outer diameter), 7 mm (inlet inner diameter), 8 mm (outlet outer diameter), 6 mm (outlet inner diameter)
Dimensions	40 • 80 mm (Ø • L)
Weight	Approx. 150 g

## APPLICATIONS

- experimental setups with different measuring and sampling devices
- calibration of particle counters and particle spectrometers
- comparison of measurement systems



Mehr Informationen:  
<https://www.palas.de/en/product/fs3>